



AIGPL



NPGA
NATIONAL PIPELINE GAS ASSOCIATION



ISO9001/V2008 Certificate



Head office in Denmark

INTEGRATED GAS TECHNOLOGIES

Add: Gydevang 39-41 DK-3450 Allerød Denmark

Tel: 0045-4576 9921 Fax: 0045-4576 9821

E-mail: sales@igt-lpg.com

Web: <http://www.igt-lpg.com>



Factory in China

NINGBO SHUAI XIAN REGULATOR CO.,LTD.

Add: No.566 Jinshan Road, Zone C, Investment centre
Jiangbei District, Ningbo city, Zhejiang, P.R.C.

Tel: 0086-574- 6250 2121 Fax: 0086-574-6250 2127

E-mail: sale1@igtchina.com

Web: <http://www.igtchina.com>



Factory in India

Integrated Gas (C) Technologies Pvt Ltd

Add: Plot No 84, ALEAP Industrial Area,
Gajularamaram,Hyderabad - 500055 Telangana, India.

Tel : +919000947218

Email: sales@igt-lpg.in



2017

INTEGRATED GAS TECHNOLOGIES

Company Profile

Welcome to Integrated Gas Technologies and Ningbo Shuai Xian Regulator Co Ltd

Integrated Gas Technologies or IGT® as we are branded is a gas control equipment company founded 2004 excelling in manufacturing and marketing of LPG cylinder regulators, cylinder valves and equipment accessories.

IGT has the business scope of offering LPG regulator products and services worldwide. Being globally competitive in the 21st century undisputedly involves business activities in China, where IGT's own factory is located in Ningbo just south of Shanghai, China since 2006.

Today the production of the LPG regulators takes place in a WFOE (Wholly Foreign Owned Enterprises) named Ningbo Shuai Xian Regulator Co Ltd. Here, in a modern building, IGT currently employs 150 people directly. The factory has been audited and approved by among other international gas companies and meet the high standards of this customer segment. It is ISO9001 certified and in 2014 the NBSX factory was also certified to BSCI (www.bsci-int.org), a Business Social Corporate Initiative to ensure compliance with European social responsibility code of conduct.

How is IGT different from other suppliers?

Before IGT entered the market in 2004 most markets had two offerings;

- either an expensive European made LPG regulator of good quality with a minimum 5 year life cycle
- or alternatively a cheap “copy” LPG regulator of very poor quality, often dangerous to use and with a short life cycle that made it expensive for the end user taking replacement cost into considerations.

In 2016 these offers still exist but in a much smaller extent as IGT now serves approximately 10 % of the global domestic regulator markets by offering a high quality and flexible product in both Basic, Standard and Premium versions all at very attractive value propositions.

IGT's promise to our customer is “Striving for perfection”. It summarizes well how IGT differentiates itself from competitors. IGT is focused on bringing well designed, perfectly assembled, 100 % tested and professionally packaged, clearly bar coded, safe and sound LPG regulator products to market in a timely and professional manner, always price/quality competitive and on a global scale, delivered directly to your warehouse or nearest preferred harbour.

All IGT products are of our own design, IPR protected, well surface treated attached with local language working instruction, and approved to international standards.

IGT utilizes the best raw materials such as zamac3, brass, steel and rubber for all our components. In addition, we conduct a 100 % quality control both during assembly and final assembled products. All IGT LPG regulators come with a 5 years product warranty and a 5 million USD product liability insurance, IGT is liable for the product quality during the complete life of the product. Our unique product and service offers a combination of high quality, affordable products and high degree of flexibility and responsiveness to your needs while delivering the product in the right place at the right time without delay, this unique market positioning differentiates IGT from all other competitive offers in the market place today.



■ Head office in Denmark



■ Factory in China

IGT invite you to do business together.

After 13 years in business IGT is now considered a well-established company, we already enjoy a leading market share in many markets, which we have served for more than 10 years. We are keen to expand our business activities around the world and to serve our customers to perfection. IGT pursues our growth vision by continually developing new products and services, establishing new distributors, new dealers and engaging with new market segments.

If you are a potential new customer or partner of Integrated Gas Technologies, please study our web site for a few minutes, and send us an email at sales@igt-lpg.com now with your inquiry. We are eager to learn how IGT can serve you in the best possible way.

Yours sincerely,

Tom Lundquist, CEO
Integrated Gas Technologies Ltd

Luke Lu, General Manager
Ningbo Shuai Xian Regulator Co.,Ltd

Contents

- 01 ● Gas Cylinder vs. Regulator with manometer level indicator
- 02 ● Certificates
- 03-05 ● Low Pressure Regulators-Compact Snap on Regulator for LPG A100is
- 06-08 ● Low Pressure Regulators-Jumbo Click on Regulator for LPG A235is
- 09-12 ● Low Pressure Regulators-Hand Wheel on Regulator for LPG A300i
- 13 ● Low Pressure Regulators-Camping Regulator for LPG A500is
- 14 ● A300 Low Pressure Single-Stage Gas Regulator (AGA)
- 15 ● A300USL Single Stage Low Pressure Gas Regulator (CSA/UL)
- 16 ● Middle Pressure Regulators-3kg/h 300-700mbar Regulator A320
- 17-18 ● LPG/Natural Gas Regulators A400i/A600
- 19-20 ● High Pressure Regulators B100/B235is/B300
- 21 ● Unreduced Pressure Coupling C100/C235is
- 22 ● Hose and Accessories
- 23 ● Packaging
- 24 ● Manometer






Sales Network

By 2017 IGT is a global supplier of domestic LPG regulators, with sales in over 110 countries.

IGT has a worldwide distribution sales network with own sales staff in Europe, United States, Latin, America/Mexico, Russia-SNG countries and China.

See complete distributor and dealer list on WWW.IGT-LPG.COM

-  Headquarters: Denmark
-  Factory and Sales Office
-  Sales Office

Gas Cylinder vs. Regulator with manometer level indicator

Gas Cylinder vs. Regulator with manometer level indicator

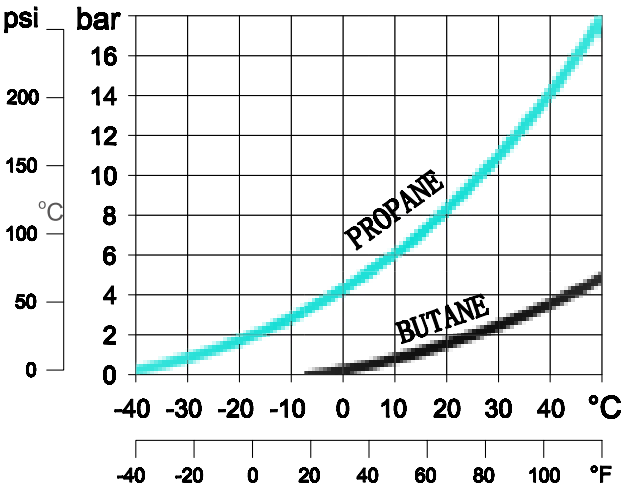
Type of gas in the cylinders

LPG contained in the cylinders are supplied either as Butane, or Propane, or a mix LPG of the two depending of country of use.

Large quantities of flammable vapour can be produced from relatively small amounts of liquid LPG stored in cylinders and gas tanks. This makes LPG an ideal portable fuel. Cylinders must always remain upright to ensure only vapour exits the cylinder valve before it enters the regulators.

At atmospheric pressure Butane boils at -2°C and propane boils at -45°C

Contained in cylinders or bulk tank, LPG remains a liquid under pressure and this pressure depends on the type of LPG and the ambient or cylinder temperature surrounding the cylinder. The chart shows the vapour pressure within a gas cylinder at various ambient temperatures.



Typical vapourisation rates on cylinders

The GAS flow rate supplied depends on: the type of gas, the liquid gas level in the cylinder, the ambient temperature, and the duration of use.

Cylinders can only supply a certain rate of vapour and must be sized correctly to meet the heat consumption of the appliances. Often an overlooked part of a LPG installation is the correct sizing or number of cylinders applied to ensure that the cylinder regulator delivers the correct flow rate.

The nominal capacity of the regulator is normally “the worst case scenario”, to ensure the regulator operate in both very cold or hot climatic conditions and at lowest cylinder contents. This means in most cases our regulators are able to supply more than the rated capacity for a short time. However off-take rates for cylinders are typically less than the regulators nominal capacity as indicated below.

Recommended maximum offtake rates for LPG cylinders

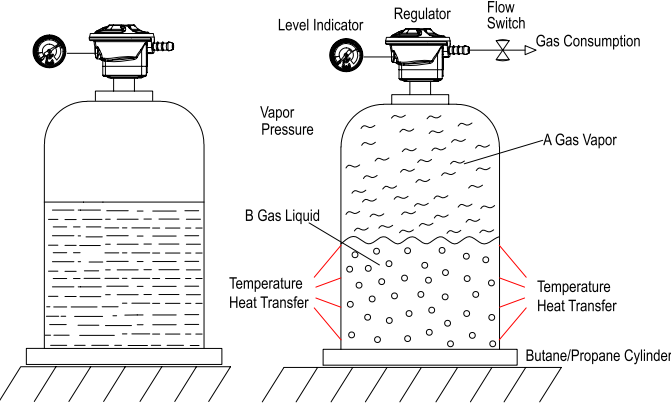
	Cylinder Size kg	Offtake rate kg/h	Offtake rate kW(kilowatt)
Butane	15kg	0.70kg/h	9.70
Propane	13kg	1.05kg/h	14.60
	19kg	1.32kg/h	18.35
	47kg	2.37kg/h	32.94

Vaporisation in the cylinder

When there is an off-take of gas from the gas cylinder, the gas volume consumed is regenerated by boiling off the liquid part. This vaporization cools down the liquid. The heat required to continue the LPG to boil is transferred from the surrounding air in contact with the cylinder.

Propane or mixed LPG delivers high pressure at colder temperatures and is vaporized faster so it is used and stored outside. Butane is used mainly for indoor or summer use.

During off-take, the temperature and pressure decreases. When only a small drop of liquid remains in the cylinder, the gas pressure has reached the minimum of 0.3bar. The larger the cylinder the greater the surface area, and the more GAS vapour can be supplied.



Certificates

Major Regulator's Certification:

- CE - Europe
- CSA - USA&Canada
- SAI - Australia
- SABS - South Africa
- SON CAP - Nigeria
- SNI - Indonesia
- SIRIM - Malaysia
- NTP - Peru
- NTC - Colombia
- NCh - Chile
- NTE INEN - Ecuador
- Gas del Estado - Argentina

Major Hoses' Certification:

- EN16436 - Europe
- DVGW - Germany
- CSA - USA&Canada
- AGA - Australia
- NTC-3561 - Colombia

Low Pressure Regulators-Compact Snap on Regulator for LPG A100is

Application:

Used in conjunction with a cylinder valve to reduce cylinder pressure to a 28-50 mbar outlet pressure.

Connected with domestic Appliances: Stoves, cookers, cabinet heaters, patio heaters, BBQ,etc.

Specifications:

Inlet options: 20 / 21 /22 / 25.6 /27 mm

Outlet options: 8 / 10 / 11mm ,thread 1/4"LH

Rated capacity 1,5 kg/h

Optional excess flow valve

Outlet pressure options: 28 mbar, 29 mbar, 30 mbar 37 mbar with inlet valve, protecting regulator against excess pressure due to leaking LPG valves

Body and cover : Die cast zinc alloy/Optional Aluminum

Diaphragm: NBR



Basic Type
A100isp

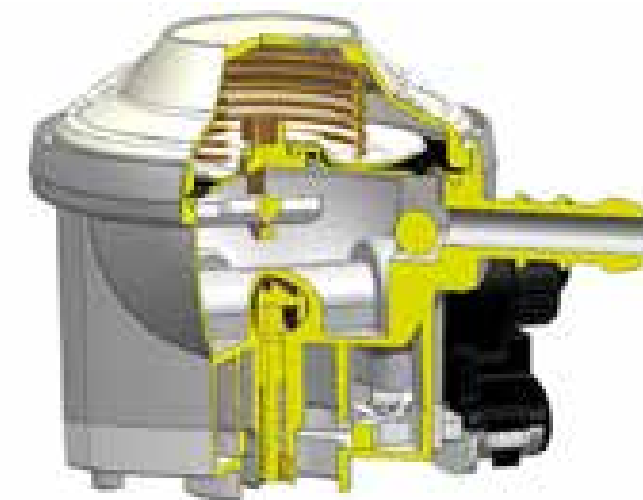


Standard Type
A100is



Premium Type
A100is-M

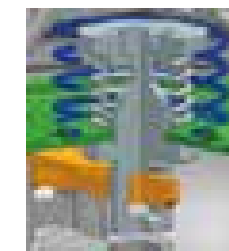
New IGT type A100is regulator



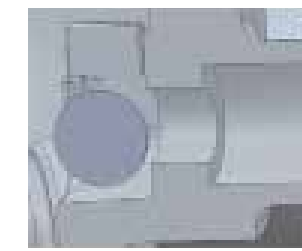
Inlet valve in locked position when regulator is clipped on to cylinder valve.Prevents gas from leaking valves to escape through regulator outlet



Regulator equipped with level indicator and Leak test function



Diaphragm relief valve



Has automatic hose break safety(Excess Flow Valve)

Standard

Most Common Inlets



Most Common Outlets

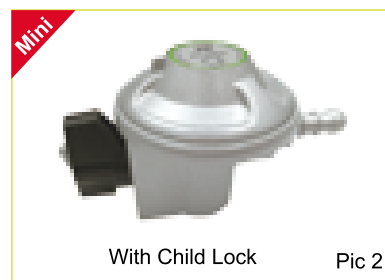


Basic Type A100isp

Inlet size options: 20mm, 21mm, 22mm, 25.6mm, 27mm
Outlet size options: 8mm/10mm/11mm
Capacity: 1.5kg/h
Color options: Silver metallic
Regulator Size: Diameter Φ63mm



Pic 1



With Child Lock

Pic 2



Pic 3

Standard Type A100is

Inlet size options: 20mm, 21mm, 22mm, 25.6mm, 27mm, G61
Outlet size options: 8mm/10mm/11mm, 1/4"LH thread
Capacity: 1.5kg/h
Auto Excess flow or Manual Excess flow
360 degree rotating manometer
Color options: Silver, blue, yellow, orange, red, Silver metallic
Regulator Size: Diameter Φ63mm



Pic 4



Pic 5



Pic 6



Pic 7

Premium A100is-M

Inlet size options: 20mm, 21mm, 22mm, 25.6mm, 27mm, Bayonet
Outlet size options: 8mm/10mm/11mm, 1/4"LH thread
Capacity: 1.5kg/h
With or without manometer for gas level/gas leak indication
360 degree rotating manometer
With Manual Excess flow
Color options: Silver, blue, yellow, orange, red, Silver metallic
Regulator Size: Diameter Φ63mm



Pic 8



Pic 9



Pic 10



Pic 11

Low Pressure Regulators-Jumbo

Click on Regulator for LPG A235is

Application:

Used in conjunction with a cylinder valve to reduce cylinder pressure to a 28-67 mbar outlet pressure.
Connected with domestic Appliances: Stoves, cookers, cabinet heaters, patio heaters, BBQ, etc.

Specifications:

Inlet size: 35mm
Outlet options: 8 / 10 / 11mm nozzle, 3/8" BSP or G1/2" thread connector
Rated capacity 1.5 kg/h
Outlet pressure options: 28/ 29 / 30 mbar
Body and cover: Die cast zinc alloy/Optional Aluminum
Diaphragm: NBR



Basic Type
A235isp

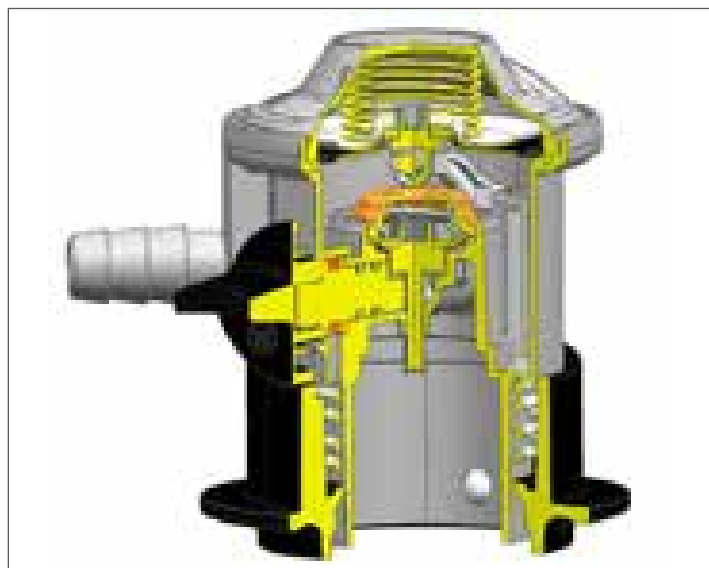


Standard Type
A235is

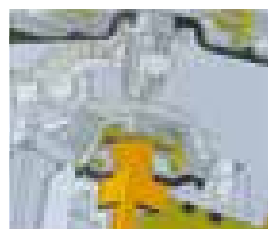


Premium Type
A235is-M

New IGT type A235is regulator



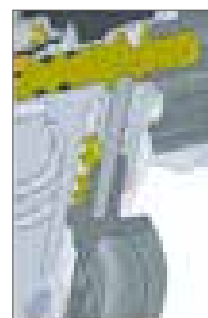
Has automatic hose break safety (Excess Flow Valve)



Two stage regulator securing less than 1 bar pressure at valve seal. And a flow performance up to 2 kg gas/h



Regulator equipped with level indicator and leak test function.



Extra security inter lock feature. To ensure gas flow cannot be opened unless locking ring in locked position

Standard

Most Common Inlets

1/2" BSP Thread connector



1/2" BSP thread (Click On system)



Most Common Outlets

1/2" Gas Flare (2-10-11mm)



1/2" Gas Flare (2mm)



Basic Type A235isp

Inlet size: 35mm
Outlet size options: 8mm/10mm/11mm
Capacity: 1.5 - 2.0 kg/h
Without Excess Flow
Color options: Silver metallic
Regulator Size: Diameter $\Phi 63$ mm



Pic 1



Pic 2

Standard Type A235/A235is

Inlet size: 35mm
Outlet size options: 8mm/10mm/11mm, 3/8" BSP or G1/2" thread connector
Capacity: 1.5 - 2.0 kg/h
With Excess Flow
With or without safety on-off switch
Color options: Silver, blue Yellow, Red, Orange, Silver metallic
Regulator Size: Diameter $\Phi 76$ mm and 63mm



Not for EU
Pic 3



Pic 4



Pic 5

Premium Type A235is-M

Inlet size: 35mm
Outlet size options: 8mm/10mm/11mm
Capacity: 1.5 - 2.0 kg/h With Excess flow
With safety on-off switch
With manometer for gas level/gas leak indication
360 degree rotating manometer
Color options: Silver, Blue Yellow, Red, Orange, Silver metallic
Regulator Size: Diameter $\Phi 63$ mm



Pic 6



Pic 7

Low Pressure Regulators-Hand Wheel on Regulator for LPG A300i

Application:

Used in conjunction with a hand wheel cylinder valve to reduce cylinder pressure to a 28-50 mbar outlet pressure.
Connected with domestic Appliances: Stoves, cookers, cabinet heaters, patio heaters, BBQ, etc.

Specifications:

Inlet options: Numerous possible types of inlet
Outlet options: 8 / 10 / 11mm nozzle, 1/4" LH thread connector
Rated capacity 1.5 kg/h
Outlet pressure options: 28 / 30 / 37 / 50 mbar
Nut options: Brass or Steel
Body and cover : Die cast zinc alloy optional aluminum
Diaphragm: NBR



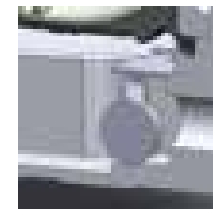
Basic Type
A300i/A310i



Standard Type
A300ie/A310ie



Premium Type
A310i-M / A310ip-M



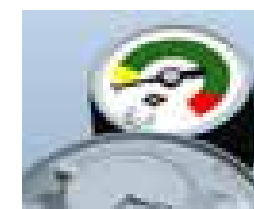
Optional Excess Flow valve, delivers in manual or automatic version



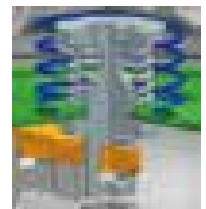
Filter at inlet to prevent foreign matters to enter regulator



Inlet pressed secured by crimping included rubber o-ring as secondary seal.



Regulator equipped with level indicator and leak test function. 360 degree rotating manometer



Diaphragm relief valve Optional

Standard



Basic Type A300i/A310i

Inlet options: Numerous possible types of inlet
Outlet size options: 8mm/10mm/11mm, 1/4"LH
Capacity: 1.5kg/h
Without Excess flow valve
Color options: Silver, Blue, Red, Silver metallic
Regulator Size: Diameter Φ63mm



Pic 1



Pic 2



Pic 3

Basic Type A300i/A310i



Pic 4



Pic 5



Pic 6

Basic Type A300i/A310i



Pic 7



Pic 8



Pic 9

Basic Type A300i/A310i



Pic 10



Pic 11



Pic 12

Standard Type A300ie/A310ie

Inlet options: Numerous possible types of inlet
Outlet size options: 8mm/10mm/11mm, 1/4"LH
Capacity: 1.5kg/h
With auto EFV or manual EFV
Color options: Silver, Blue, Red, Silver metallic



Pic 13



Pic 14



Pic 15



Manual EFV
Pic 16



Manual EFV
Pic 17



Manual EFV
Pic 18

Premium Type A300i-M/A310i-M

Inlet options: Numerous possible types of inlet
Outlet size options: 8mm/10mm/11mm, 1/4"LH
Capacity: 1.5kg/h
With manometer for gas level/gas leak indication
With auto excess flow valve or manual EFV
Color options: Silver, Blue, Red, Silver metallic



Pic 19



Manual EFV
Pic 20



Pic 21



Pic 22



Pic 23



Pic 24



Pic 25



Pic 26

Low Pressure Regulators-Camping Regulator for LPG A500is



A300

LOW PRESSURE SINGLE-STAGE GAS REGULATOR



Application:

Used for outdoor camping gas cylinders for household.

Specification:

Inlet options: M14, M16, 7/16"

Outlet options: 8/10/11mm nozzle, 1/4"LH thread connector

Rated capacity 1.5kg/h

Outlet pressure options: 28/30mbar

Body and cover: Die cast zinc alloy optional aluminum

Diaphragm: NBR

Basic type A500is

Regulator size: Diameterø63 mm



New
launching



Standard type A500i

Regulator size: Diameterø63 mm

New



Rotating Inlet

Pic 3



Pic 4

Premium type A500i-M

Regulator size: Diameterø63 mm

New



Pic5

New



360 degree rotating manometer

Pic6

Features:

- 50000 times cycle test = simulation of 10 years life time
- PLI (product liability insurance) 5 million usd
- 5 years limited warranty,
- Optional features:
- Manometer for leak test and gas level indication
- Excess flow valve
- Diaphragm relief valve.

■ Inlet Pressure	250kPa~1750kPa
■ Outlet Pressure	2.8kPa
■ Flow Capacity	2.0Kg/h
■ Inlet Connection	0.880 14NGO LH W22.352 x 1.814 LH
■ Outlet Connection	hose assembly with 5/8" UNF LH thread or 3/8" FBSP
■ Application	BBQ,Fish Cookers,Gas Heaters,Stoves

New
launching



Features:

- Excess flow valve
- Diaphragm relief valve
- 50000 times cycle test = simulation of 10 years life time
- PLI (product liability insurance) 5 million usd
- 5 years limited warranty

Optional features:

- Manometer for leak test and gas level indication.

■ Inlet Pressure	25-250 PSIG
■ Outlet Pressure	280mmH2O=(11"W.C.)
■ Flow Capacity	1.5Kg/hr
■ BTU/hr	70500
■ Inlet Connection	QCC OR P.O.L
■ Outlet Connection	5/8"-18UNF
■ Application	BBQ,Fish Cookers,Gas Heaters,Stoves

Middle Pressure Regulators-3kg/h 300-700mbar Regulator A320

Application:

Used in large power LPG, Natural gas

Specifications:

Inlet options: Numerous possible types of inlet
Outlet options: 1/4"LH thread connector
Rated capacity 3 kg/h
Outlet pressure options: 300 /500 /700 mbar
Nut options: Brass or Steel
Body and cover : Die cast zinc alloy
Diaphragm: NBR
Regulator Size: Diameter Φ76mm



Pic 1



Pic 2



Pic 3



Pic 4



Pic 5

Products Application



LPG Gas Regulators A400i

4kg/h Mid Pressure Regulator A400i

Adjustable or fixed outlet pressure

Application:

To reduce the pressure of LPG in the domestic installations.

Optional with internal relief valve security system, to prevent overpressure in the pipeline.

Specifications:

Inlet options: Numerous possible types of inlet

Outlet options: 10mm, 3/8"LH thread connector

Rated capacity 4 kg/h

Outlet pressure options: 30-700mbar

Nut options: Brass or Steel

Body and cover : Die cast zinc alloy

Diaphragm: NBR



New



Pic 1

New



Pic 2

New



Pic 3

New



Pic 4

Natural Gas Regulators A600

Natural Gas A600

Application:

To reduce the pressure of Natural Gas in the domestic installations. With; internal relief valve security system, to prevent overpressure in the pipeline of Natural Gas (GN).

Specifications:

Inlet connection: 1/4" NPT Female

Outlet connection: 3/8" NPT Female

Inlet Pressure range:

Min.1.72bar; Max. 4.0bar

Flow capacity:3.2 m3/h NG



Natural gas hose



High Pressure Regulators B100/B235is/B300

Snap on compact HP regulator B100

Application:

Used in conjunction with a cylinder valve to reduce cylinder pressure to a 0-2 bar outlet pressure required for operation of torches, burners and furnaces for commercial and industrial applications

Specifications:

Inlet options: 20/21/22/27mm
Outlet options: 8mm/11mm
Rated capacity 8 kg/h
Outlet pressure : 0~2bar (Adjustable)
Body and cover : Die cast zinc alloy
Diaphragm: NBR



Jumbo HP regulator B235is

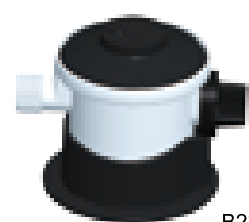
Application:

Used in conjunction with a cylinder valve to reduce cylinder pressure to a 0-4 bar outlet pressure required for operation of torches, burners and furnaces for commercial and industrial applications

Specifications:

Inlet size: 35mm
Outlet options: 8mm/10/11mm, 3/8" BSP or G1/2" thread connector
Rated capacity 4 kg/h
Outlet pressure : 0~4bar (Fixed or Adjustable)
Body and cover : Die cast zinc alloy
Diaphragm: NBR

New



B235isf

New



B235is

New



B235is-M

High Pressure Regulators B100/B235is/B300

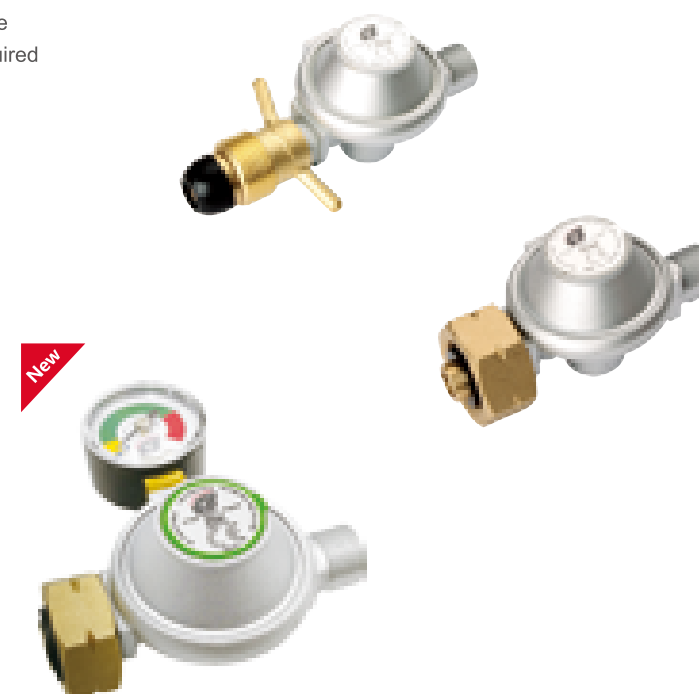
Hand Wheel HP regulators-B300/B310/B310-M

Application:

Used in conjunction with a cylinder valve to reduce cylinder pressure to a 0-4 bar outlet pressure required for operation of torches, burners and furnaces for commercial and industrial applications

Specifications:

Inlet: Numerous possible types of inlet
Outlet connection : 3/8" BSP thread connector
Outlet pressure options: 1.5 / 2.5 / 4bar
Nut material options: Steel or Brass
Body and cover : Die cast zinc alloy
Diaphragm: NBR



Excess Flow Valve -A900

Specification:

Inlet Female 3/8" LH
outlet Male 3/8" LH
Inlet press: 1.5 - 4 bar
Cut off rate: 6 - 8.5 kg/hr
DVGW approved.



Unreduced Pressure Coupling C100/C235is

Compact Coupling C100

Application:

Used in conjunction with a cylinder valve to deliver an unreduced pressure required for operation of torches burners and furnaces for commercial and industrial applications

Specifications:

Inlet options: 20/21/22/25.6/27mm
Outlet options: 8mm/11mm, 1/4"LH and 1/2"LH thread
Vertical or Horizontal
Capacity 4 kg/h
With non return valve
Body and cover : Die cast zinc alloy



Jumbo Coupling C235is

Application:

Used in conjunction with a cylinder valve to deliver an unreduced pressure required for operation of torches burners and furnaces for commercial and industrial applications

Specifications:

Inlet size: 35mm
Outlet options: 8mm/10/11mm,
3/8" BSP or G1/2" thread connector
Capacity 4 kg/h
Outlet pressure : Full cylinder pressure
With non return valve
Body and cover : Die cast zinc alloy
Diaphragm: NBR



Hose and Accessories

Hoses and clamps

Application:

These hoses are High pressure hoses(Pigtails) used to connect LPG cylinders to manifolds, automatic changeovers or multi cylinder systems.

Standards: BS3212 , EN16436
DVGW,AGA,CSA,NTC-3561
Inside dia.:6/6.3/8/9/10mm
Certification: Optional certifications, REACH,ROH's,Phthalate.
Clamps: Stainless, 8-18mm/12-22mm, with or without wing.



Fittings

Application:

These fittings can be used in LPG, installations.

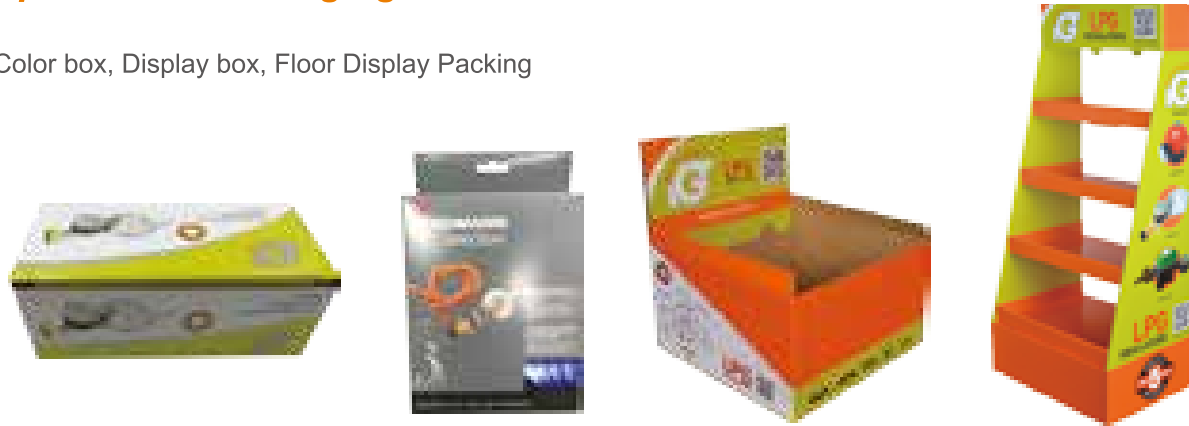


EU adaptor set

Packaging

Options For Packaging:

Color box, Display box, Floor Display Packing



Plastic bag with header card Packaging



Blister packaging



Manometer

IGT Low Level Indicator and Leak detection gauge

The gas level indicator is working on the gas cylinders pressure.

When you empty a gas cylinder consuming the LPG the pressure does not fall in a linear way.

The gauge needle will not move downwards stepwise as you start consuming the gas. Actual it stays steady in the green area until the gas level reach 3-5 % and you have less than 500 gram gas left in the cylinder. Only when the gas consumption exceeds the gas supply of the gas cylinder does the gauge needle move and then quite fast into the yellow area. With 500 gram LPG left you will have 1-2 hours cooking/heating left depending of your gas appliance consumption pattern.

The indicator works well as intended, as it is the early warning of running out of gas we want to achieve. For most users 500 gram LPG equals 1-2 days consumption and it is a reasonable precise early warning of running dry.

A100i



A300i



A200i



Level Indication:

For LPG - Butane - Propane Cylinders

Note Actual level can only be observed at gas flow from gas cylinder to gas appliance.

- Cylinder empty no more liquid Gas. Do not use before cylinder is re-filled.
- Early warning - Plan re-fill soonest. Liquid level estimate 0.2 to 0.8gk ~ 1 to 4 hour use.
- Sufficient level of gas inside cylinder. Ready to go on. Estimated level of gas min. 1kg ~ 5 hours use.
- WARNING: High temperature of Cylinder overfilled.

Leak Detection:

Regulator is connected to gas appliance by a gas hose. Gas appliance should be in shut off position.

Regulator is attached in correct position on the gas cylinder valve.

The Regulator is switched to ON position. The dial of the indicator should then go into green area.

The Regulator switch is moved back to OFF position. The dial of the indicator should then remain in green area.

Wait 5 minutes. If the dial is still in the same green area the installation is safe without leaks.

If the dial have moved to yellow or blue color, the installation is not safe and should be checked by using leak detecting spray.

Any leak should be eliminated before use of the gas appliance.